



WORKING PAPER SERIES

## **Idiosyncratic Volatility, Stock Market Volatility, and Expected Stock Returns**

**Hui Guo  
and  
Robert Savickas**

Working Paper 2003-028B  
<http://research.stlouisfed.org/wp/2003/2003-028.pdf>

September 2003  
Revised July 2005

FEDERAL RESERVE BANK OF ST. LOUIS  
Research Division  
411 Locust Street  
St. Louis, MO 63102

---

The views expressed are those of the individual authors and do not necessarily reflect official positions of the Federal Reserve Bank of St. Louis, the Federal Reserve System, or the Board of Governors.

Federal Reserve Bank of St. Louis Working Papers are preliminary materials circulated to stimulate discussion and critical comment. References in publications to Federal Reserve Bank of St. Louis Working Papers (other than an acknowledgment that the writer has had access to unpublished material) should be cleared with the author or authors.

Photo courtesy of The Gateway Arch, St. Louis, MO. [www.gatewayarch.com](http://www.gatewayarch.com)

# **Idiosyncratic Volatility, Stock Market Volatility, and Expected Stock Returns<sup>\*</sup>**

Hui Guo

Robert Savickas

Federal Reserve Bank of St. Louis

George Washington University

This Version: July 2005

---

<sup>\*</sup> Mailing Addresses: Research Division, the Federal Reserve Bank of St. Louis, P.O. Box 442, St. Louis, MO 63166-0442, E-mail: [hui.guo@stls.frb.org](mailto:hui.guo@stls.frb.org) (Hui Guo); Department of Finance, George Washington University, 2023 G Street, N.W., Washington, DC 20052, E-mail: [Savickas@gwu.edu](mailto:Savickas@gwu.edu) (Robert Savickas). We especially thank the editor, Torben G. Andersen, and an associate editor (the referee), whose many detailed and constructive comments greatly improved the paper. We are also grateful to Samuel Thompson, Tuomo Vuolteenaho, seminar participants at George Washington University and the University of New Hampshire, and participants at the 2004 Missouri Economic Conference, the 2004 Financial Management Association meeting, and the 2005 American Finance Association meeting for helpful suggestions. Martin Lettau, Kenneth French, and Avanidhar Subrahmanyam provided some of data used in this paper. Jason Higbee provided excellent research assistance. The views expressed in this paper are those of the authors and do not necessarily reflect the official positions of the Federal Reserve Bank of St. Louis or the Federal Reserve System.

# **Idiosyncratic Volatility, Stock Market Volatility, and Expected Stock Returns**

## **Abstract**

We find that the value-weighted idiosyncratic stock volatility and aggregate stock market volatility jointly exhibit strong predictive power for excess stock market returns. The stock market risk-return relation is found to be positive, as stipulated by the CAPM; however, idiosyncratic volatility is negatively related to future stock market returns. Also, idiosyncratic volatility appears to be a pervasive macrovariable, and its forecasting abilities are very similar to those of the consumption-wealth ratio proposed by Lettau and Ludvigson (2001).

Keywords: Stock return predictability, Stock market risk-return relation, Out-of-sample forecast, ICAPM, Dispersion of opinion, Consumption-wealth ratio.

JEL number: G1.

## 1. INTRODUCTION

Early authors, e.g., Campbell (1987), Glosten et al. (1993), and Whitelaw (1994), fail to uncover a positive risk-return relation in the stock market across time, as dictated by the CAPM. In this paper, we investigate whether their results reflect an omitted variables problem: In addition to stock market volatility, aggregate idiosyncratic volatility may also be an important determinant of the equity premium for at least three reasons. First, it is priced because many investors hold poorly diversified portfolios (e.g., Levy 1978 and Malkiel and Xu 2001). Second, it is a proxy for the divergence of opinion, which could lead a stock to be overvalued initially and to suffer capital losses subsequently if short-sales constraints are binding (e.g., Miller 1977). Third, it tracks conditional stock market returns because, by construction, it measures the conditional variance of the risk factor(s) of a multi-factor or ICAPM model omitted from the CAPM (e.g., Lehmann 1990).

We follow the early literature to construct the proxies for idiosyncratic volatility and stock market volatility. Similar to Campbell et al. (2001) and Goyal and Santa-Clara (2003), we define realized value-weighted idiosyncratic volatility (IV) as

$$(1) \quad IV_t = \sum_{i=1}^{N_t} \omega_{it} \left[ \sum_{d=1}^{D_{it}} \eta_{id}^2 + 2 \sum_{d=2}^{D_{it}} \eta_{id} \eta_{id-1} \right] \quad \text{and} \quad \omega_{it} = \frac{v_{it-1}}{\sum_{j=1}^{N_t} v_{jt-1}},$$

where  $N_t$  is the number of stocks in quarter  $t$ ,  $D_{it}$  is the number of trading days for stock  $i$  in quarter  $t$ ,  $v_{it-1}$  is the market capitalization of stock  $i$  at the end of quarter  $t-1$ , and  $\eta_{id}$  is the idiosyncratic shock to the excess return on stock  $i$  in day  $d$  of quarter  $t$ . Following Merton (1980) and Andersen et al. (2003), for example, we define realized stock market volatility (MV) as:

$$(2) \quad MV_t = \sum_{d=1}^{D_t} (e_{md} - \bar{e}_{md})^2,$$

where  $e_{md}$  is the excess stock market return in day  $d$  of quarter  $t$  and  $\bar{e}_{md}$  is its quarterly average. Note that the volatility measure in equation (2) is potentially downward biased for two reasons. First, the quarterly average of the daily return is a noisy measure of the expected daily return. Second, it does not account for the (positive) serial correlation in the daily stock market return. However, we find essentially the same results by (1) assuming that the expected daily return is equal to zero and (2) adjusting for the serial correlation, as in French et al. (1987).

Over the period 1963:Q4 to 2002:Q4—the longest quarterly sample available to us when the paper was written—we find that, although IV and MV individually have negligible forecasting power in the in-sample regression, they jointly are significant predictors of excess stock market returns, with an adjusted R-squared of over 10 percent. We find very similar results using subsamples and alternative measures of IV. Moreover, their predictive abilities are also statistically significant in the out-of-sample tests. Therefore, as expected, early authors fail to uncover a positive risk-return relation in the stock market possibly because of an omitted variables problem: IV is negatively and MV is positively related to future stock returns, while they are positively related to each other.

IV appears to be a pervasive macrovariable that captures systematic movements of stock returns. For example, we form decile portfolios on past idiosyncratic volatility and find that aggregate IV is always significantly negative in the forecasting equation of portfolio returns and always drives out portfolio-specific IV. Similarly, aggregate IV also forecasts the value premium and returns on international stock market indices constructed by Morgan Stanley Capital International (MSCI). We also compare IV with the consumption-wealth ratio (CAY) proposed by Lettau and Ludvigson (2001) because, similar to IV, CAY is also found to help uncover a positive stock market risk-return relation (e.g., Guo 2006). We find that IV is strongly (and

negatively) correlated with CAY and that its forecasting abilities attenuate substantially and vanish in some specifications if we control for CAY. Similarly, the predictive power of CAY becomes noticeably weaker when combined with IV, although it remains significant in our sample. Therefore, IV and CAY capture similar predictable variations of stock market returns.

Lastly, we compare IV with aggregate liquidity measures, which have systematic movements (e.g., Chordia et al. 2000, Hasbrouck and Seppi 2001, and Huberman and Halka 2001), are priced in the cross-section of stock returns (e.g., Pastor and Stambaugh 2003 and Acharya and Pedersen 2005), and forecast stock market returns (e.g., Amihud 2002 and Jones 2002). Interestingly, we find that IV and CAY both are highly correlated with, and have similar predictive abilities to, many commonly used liquidity measures such as the trading volume, the turnover, and the bid-ask spread.

The negative relation between IV and conditional excess stock market returns contradicts the non-diversification hypothesis advocated by Levy (1978) and Malkiel and Xu (2001). It is, however, consistent with the other two alternative hypotheses. First, IV measures the conditional variance of an omitted risk factor, namely, the liquidity risk, which, as argued by Guo (2004), could be negatively related to the stock market risk. Second, IV is a measure of the dispersion of opinion, which, as argued by Cao et al. (2005), is positively related to stock market volatility but negatively related to conditional excess stock market returns. It should be noted that, in both Guo and Cao et al., IV reflects a systematic risk factor of a multi-factor or ICAPM model omitted from the CAPM. However, given that the dispersion of opinion is likely to be closely related to various liquidity measures considered in this paper, the analysis does not allow us to distinguish between the two alternative hypotheses.

Our results differ from Goyal and Santa-Clara (2003), who find that conditional excess stock market returns are positively correlated with IV but are not correlated with MV. We attribute the differences to two factors. First, we focus most of our attention on the value-weighted IV since we find that the equal-weighted measure (used by Goyal and Santa-Clara) forecasts stock returns mainly because of its co-movements with MV. Second, Ghysels et al. (2005) uncover a positive stock market risk-return relation after taking into account the effect of a long distributed lag of returns on volatility. Therefore, IV and MV are likely to be more precisely measured at the quarterly frequency used in this paper than the monthly frequency used by Goyal and Santa-Clara. Some recent authors, e.g., Scruggs (1998), Harrison and Zhang (1999), and Guo and Whitelaw (2005), have also found that omitting the hedge component of Merton's (1973) ICAPM introduces a downward bias in the stock market risk-return relation. Moreover, Diether et al. (2002), Easley et al. (2002), and Ang et al. (2005) have documented a cross-sectional negative relation between idiosyncratic volatility and expected returns.

The remainder of the paper is organized as follows. We discuss data in Section 2 and present the main results of forecasting stock market returns in Section 3. Section 4 investigates whether idiosyncratic volatility is a pervasive macrovariable and analyzes its relation with CAY and aggregate stock market liquidity. Some concluding remarks are offered in Section 5.

## **2. DATA**

We use daily CRSP (the Center for Research on Security Prices) stock files, which span from July 1962 to December 2002, to construct IV defined in equation (1). There is ongoing debate about the CAPM. In particular, Fama and French (1993) argue that we should augment it with two additional risk factors, SMB and HML, and show that their three-factor (FF) model is

quite successful in explaining the cross-section of stock returns. SMB is the return on a portfolio that is long in small stocks and short in big stocks, and HML is the return on a portfolio that is long in stocks with high book-to-market value ratios and short in stocks with low book-to-market value ratios. In this paper, we use the FF model to control for the systematic risk; however, we obtain very similar results using (1) the idiosyncratic shock based on the CAPM and (2) the raw return. Campbell et al. (2001) document an upward deterministic trend in IV and find that it is more pronounced for small stocks than big stocks. To mitigate the potential impact of this trend on our econometric inference, we construct IV using 500 stocks with the biggest market capitalization measured at the end of the previous quarter, although we find very similar results using all stocks in CRSP stock files.

The daily risk-free rate and the daily Fama and French three factors, which span from July 1963 to December 2002, are obtained from Kenneth French at Dartmouth College. The idiosyncratic shock,  $\eta_{id}$ , is thus the residual from the regression of the excess return,  $er_{id}$ —the difference between the return on stock  $i$  and the risk-free rate—on the Fama and French three factors,  $f_d$ ,

$$(3) \quad er_{id} = \alpha + \beta \cdot f_d + \eta_{id}.$$

Given that factor loadings,  $\beta$ , might change over time, we estimate equation (3) using a rolling sample. For example, the idiosyncratic shock at time  $d$  is equal to  $er_{id} - \hat{\alpha} - \hat{\beta} \cdot f_d$ , where we obtain the coefficient estimates  $\hat{\alpha}$  and  $\hat{\beta}$  using the daily data from  $d-130$  to  $d-1$ . We require a minimum of 45 daily observations in order to obtain less noisy parameter estimates. Similar to Goyal and Santa-Clara (2003), we exclude stocks that have less than 15 return observations in a

quarter and drop the term  $2 \sum_{d=2}^{D_{it}} r_{id} r_{id-1}$  from equation (1) if  $\sum_{d=1}^{D_{it}} r_{id}^2 + 2 \sum_{d=2}^{D_{it}} r_{id} r_{id-1}$  is less than zero. We



also drop stocks for which the market capitalization data at the end of the previous quarter are missing.

We use the difference between daily CRSP value-weighted stock market returns and the daily risk-free rate to construct MV, as defined in equation (2). It is important to note that the October 19, 1987, stock market crash has a confounding effect on our measure of stock market volatility: Realized volatility is 6.9 percent in 1987:Q4, compared with the second-largest realization of 2.7 percent in our sample. Schwert (1990) finds that the behavior of realized volatility around the crash is unusual in many ways. Seyhun (1990) argues that the crash is not explained by the fundamentals. Hong and Stein (2003) suggest that the large fluctuations in stock prices immediately after the crash represented a working out of microstructural distortions created on that chaotic day, e.g., jammed phone lines, overwhelmed market makers, and unexecuted orders. To minimize the outlier effect of the 1987 crash, we follow Campbell et al. (2001) and many others and replace realized volatility of 1987:Q4 with the second-largest observation in the sample. Nevertheless, we find qualitatively the same results using the raw measure of MV, especially if we add a dummy variable for the crash or take a log transformation to mitigate its impact: Our results are robust to alternative treatments of the crash.

The monthly excess stock market returns (ER) is the difference between the monthly CRSP value-weighted stock market return and the monthly CRSP risk-free rate, and we aggregate the monthly excess return into quarterly data through geometric compounding. We obtain CAY from Martin Lettau at New York University. We also find that the stochastically detrended risk-free rate, RREL—the difference between the risk-free rate and its average over the past 12 months—provides additional information about future stock returns beyond MV and

IV. However, our results are not sensitive to whether we include it in the forecasting equation or not.

Figure 1 plots IV (solid line), with the shaded areas indicating business recessions dated by the National Bureau of Economic Research (NBER). We note that IV rose dramatically in the late 1990s, and we will discuss the effect of this unusual episode on our results below. Consistent with Campbell et al. (2001) and many others, it tends to rise during business recessions and exhibits an upward trend. We report below the ordinary least-squares (OLS) regression results of IV on a constant and a linear time trend, with the heteroskedasticity-corrected t-statistics in parentheses. While a formal investigation is beyond the scope of this paper, our preliminary results confirm Campbell et al. that the linear time trend accounts for substantial variations of IV. (Xu and Malkiel 2003 and Wei and Zhang 2006 for example provide some rationales for the upward trend in idiosyncratic volatility.)

$$(4) \quad IV_t = C + t + \varepsilon_t$$

0.007	0.126E-03	
(5.792)	(5.609)	Adjusted R-squared: 0.241

Given that the deterministic trend might lead to spurious regressions, for robustness we also report the results using the detrended idiosyncratic volatility (D\_IV), which is the residual term of equation (4). For comparison, we also plot MV (dashed line) in Figure 1, which is substantially smaller than IV. The two series move closely with one another but the correlation is not perfect. Interestingly, as shown in Figure 2, IV (solid line) also moves closely with CAY (dashed line) but in the opposite direction.

Table 1 provides summary statistics of the main variables used in this paper. Consistent with the visual inspection from Figures 1 and 2, IV is positively correlated with MV and is negatively correlated with CAY, with correlation coefficients of 0.77 and -0.52, respectively.

The correlation is 0.67 (-0.65) between D\_IV and MV (CAY). IV and D\_IV are relatively persistent, with the autocorrelation coefficients of 0.83 and 0.77, respectively, compared with 0.56 for MV.

### 3. FORECASTING EXCESS STOCK MARKET RETURNS

#### 3.1 *In-Sample Forecasting Regressions*

Table 2 presents the OLS regression results using IV and MV as forecasting variables for excess stock market returns. Over the full sample period 1963:Q4 to 2002:Q4 (panel A), we find that, individually, MV is positively (row 1) and IV is negatively (row 2) related to future excess stock market returns but neither variable is statistically significant at the 5 percent level.

However, the two variables jointly are highly significant in the forecasting equation, with an adjusted R-squared of over 10 percent (row 4). These results may likely be explained by a classic omitted variables problem: While IV is negatively and MV is positively related to future stock returns, the two variables are positively related to one another, as shown in Table 1. For illustration, we recall the omitted variables bias as expounded in, e.g., Greene (1997, p. 402).

Suppose ER is the dependent variable, IV is the omitted variable with the true parameter,  $\gamma_1$ , and MV is the included variable with the true parameter,  $\gamma_2$ . Then the point estimate of the

coefficient of MV is equal to  $\hat{\gamma}_2 = \gamma_2 + \frac{COV(MV, IV)}{VAR(MV)} \gamma_1$ . Given that  $\gamma_1$  is negative and

$COV(MV, IV)$  is positive, the point estimate,  $\hat{\gamma}_2$ , is thus biased downward towards zero. This example indicates that the early authors fail to find a positive risk-return relation possibly because of an omitted variables problem.

The results in panel A of Table 2 cannot be explained by the spurious regressions stressed by Ferson et al. (2003). First, the autocorrelation is 0.83 and 0.56 for IV and MV, respectively (Table 1). Therefore, our forecasting variables are not as persistent as most forecasting variables considered by Ferson et al. Second, the absolute values of t-statistics are 4.686 and 5.361 for MV and IV, respectively, in row 4 of Table 2. These numbers are substantially higher than the empirical critical t-values reported in Table II of Ferson et al. for all cases with only one exception: The t-value for MV is slightly lower than 4.9—the case in which the adjusted R-squared is 0.15 and the autocorrelation of predictors is 0.99. But the autocorrelation of our predictors is much smaller than 0.99, as shown in Table 1. Also, Lanne (2002) finds no evidence that expected stock market returns follow such a persistent process. Third and more importantly, as we show in subsection 3.4, IV and MV also exhibit statistically significant out-of-sample predictive abilities for stock market returns.

As discussed in the introduction, our forecasting variables are theoretically motivated and thus not subject to the criticism of data mining. It is also comforting to note that t-statistics of IV and MV are still larger than the critical values for the cases of 25 predictors or less in Table III of Ferson et al. (2003), in which they consider the case of spurious regression jointly with data mining. Of course, the critical values in their Table III would reject any forecasting model, including “the correct model” considered by these authors, if we assume that the documented predictability is based on a substantial degree of data mining. Moreover, there are ways to deal with data mining, e.g., using theoretically motivated variables and conducting out-of-sample forecast, as in our paper.

Another potential issue is multicollinearity: MV and IV are closely correlated, as shown in Table 1. However, multicollinearity cannot explain our results because it usually leads to low

t-statistics, in contrast with the sharp increase of t-statistics from rows 1 and 2 to row 4 in Table 2. Moreover, the characteristic-root-ratio test proposed by Belsley et al. (1980) confirms that multicollinearity is unlikely to plague our results.

It is possible that IV forecasts stock market returns because it is correlated with some commonly used predictive variables. For example, consistent with Campbell et al. (1997) and others, RREL has some predictive power for stock returns (row 3). However, adding RREL to the forecasting equation has little effect on forecasting abilities of IV and MV (row 5). Moreover, we find that IV and MV drive out many other macrovariables, i.e., the dividend yield, the term premium, and the default premium, from the forecasting equation. To conserve space, we do not report these results here but they are available upon request.

The deterministic trend in IV might bias our econometric inference. To address this issue, we consider two additional specifications: (1) using the detrended idiosyncratic volatility,  $D\_IV$ , in row 6 and (2) adding a linear time trend to the forecasting equation in row 7. In both cases, we obtain essentially the same results as those in row 5.

In panel A of Table 2, we made an ad hoc downward adjustment for MV in 1987:Q4. To be robust, we repeat the above analysis using unadjusted MV and report the results in panel B of Table 2. Again, we find that IV is always negative and highly significant, while MV is always positive and significant or marginally significant. Although we obtain qualitatively the same results using unadjusted MV, its predictive abilities are noticeably weaker than those reported in panel A of Table 2. To further investigate the potential effect of the 1987 crash, we include an additional variable—the product of MV with a dummy variable, which is equal to 1 for 1987:Q4 and 0 otherwise. We report the results in panel C of Table 2. The column MV now has four numbers for each specification: The top (bottom) two numbers are point estimate and t-value,

respectively, for MV (the 1987 crash dummy). We find that the 1987 crash dummy is always negative and statistically significant, confirming that the 1987 crash has a confounding effect on realized volatility. However, the sum of two slope parameters associated with MV is always positive, indicating that MV has an overall positive effect on expected stock returns immediately after the crash. Moreover, we find that the other results are almost identical to those reported in panel A of Table 2.

Lastly, in panel D of Table 2 we report the estimation results using log-transformed MV and IV. As expected, the log-transformation substantially mitigates the effect of potential outliers and we obtain very similar results to those in panel A of Table 2. Overall, our results indicate that the 1987 crash has a confounding effect on realized volatility and thus needs to be adjusted for. Nevertheless, our results are not sensitive to the particular choice of adjustment—i.e., adjusting MV of 1987:Q4 downward, adding a dummy variable for 1987:Q4, or using a log-transformation. To conserve space, we report only the results obtained from using adjusted MV in the remainder of the paper.

### 3.2 *Subsamples*

As shown in Figure 1, IV rose dramatically in the late 1990s until the stock market correction in the early 2000s. To investigate whether this episode has any particular influence on the negative relation between IV and expected stock returns documented in Table 2, we repeat our analysis using two subsamples and report the results in Table 3: 1963:Q4 to 1982:Q4 (panel A) and 1983:Q1 to 2002:Q4 (panel B). In the first subsample, we find that, consistent with the full sample, adding IV to the forecasting equation substantially improves the predictive ability of MV (row 4). We obtain the same results if we use D\_IV in place of IV (row 6) or add a linear

time trend to the forecasting equation (row 7). The results of the second subsample reported in panel B are also very similar to those of the full sample. Such a stable forecasting relation across time explains the good out-of-sample performance, which we will discuss in subsection 3.4. However, there are two noticeable differences between two subsamples. First, the adjusted R-squared is much higher in panel A than panel B. This result is consistent with Pesaran and Timmermann (1995), among others, who show that predictable variations of stock returns change over time. Second, RREL becomes insignificant in the second subsample. However, this result is sensitive to the observations of 2001-02, during which both the short-term rate and stock market prices fell steeply.

### 3.3 *Alternative Measures of Idiosyncratic Stock Volatility*

To investigate whether the results of Table 2 are sensitive to the particular measure of IV, we use various alternative measures of IV to forecast excess stock market returns and report the results in Table 4. Unless otherwise indicated, we calculate idiosyncratic stock volatility using all CRSP stocks through value-weighting. In panel A, we use the raw stock return in equation 1 to calculate the average stock volatility (VWAV), which is approximately the sum of IV and MV. We use only the market factor to control for the systematic risk in panel B (VWIV\_M) and use the FF model in panel C (VWIV\_FF). All three panels report very similar results to those in Table 2. Therefore, our results are not sensitive to alternative measures of IV and we use IV constructed from the 500 biggest stocks in the remainder of the paper.

For comparison, we also present the results of the *equal-weighted* average stock volatility (EWAV) used by Goyal and Santa-Clara (2003) in panel D. We follow their exact procedure and calculate EWAV on a monthly basis. We then use the EWAV of the last month in each

quarter to forecast one-quarter-ahead stock returns over the sample period 1962:Q4 to 1999:Q4. We replicate their main result in row 10: EWAV is positive and highly significant in the forecasting regression, with an adjusted R-squared of over 4 percent. However, EWAV becomes insignificant after we include MV in the forecasting equation, while MV is significantly positive (row 11). This result is not sensitive to whether we also add RREL to the forecasting equation (row 12). Therefore, the equal-weighted average stock volatility proposed by Goyal and Santa-Clara forecasts stock returns mainly because of its co-movements with stock market volatility.

### *3.4 Tests of Out-of-Sample Forecast Performance*

Some recent authors, e.g., Bossaerts and Hillion (1999) and Goyal and Welch (2003), cast doubt on the in-sample evidence of stock return predictability because they find that the predictive variables used by the early authors do not forecast stock returns out of sample. However, Inoue and Kilian (2004) argue that, while out-of-sample tests are not necessarily more reliable than in-sample tests, in-sample tests are more powerful than out-of-sample tests, even asymptotically. To address this issue, we use three statistics to compare the out-of-sample performance of our forecasting models with a benchmark of constant excess stock returns. First is the commonly used mean-squared forecasting error (MSE) ratio. Second is Clark and McCracken's (2001) encompassing test (ENC-NEW), which tests the null hypothesis that the benchmark model incorporates all the information about the next quarter's excess stock market return against the alternative hypothesis that our forecasting variables provide additional information. Third is McCracken's (1999) equal forecast accuracy test (MSE-F). In the MSE-F test, the null hypothesis is that the benchmark model has a MSE less than or equal to that of the augmented model and the alternative hypothesis is that the augmented model has a smaller MSE.



Clark and McCracken (2001) show that the latter two tests have the best overall power and size properties among a variety of tests proposed in the literature.

We report the results of the out-of-sample forecast tests in Table 5. As in Lettau and Ludvigson (2001), we use the first one-third of the observations for the initial in-sample estimation and form the out-of-sample forecasts recursively in the remaining sample. That is, we use the observations over the period 1963:Q4 to 1976:Q4 to make the forecast for 1977:Q1 and update the sample to 1977:Q1 to forecast the return for 1977:Q2 and so forth. It should be noted that we also estimate the expected return in the benchmark model recursively using the return data available at the time of forecast. The column  $MSE_A / MSE_B$  is the MSE ratio of the augmented model to that of the benchmark model. The column Asy. CV reports the 95 percent critical value from the asymptotic distribution provided by Clark and McCracken (2001) and McCracken (1999) and the column BS. CV is the 95 percent critical value obtained from bootstrapping, as in Lettau and Ludvigson (2001). We use IV and MV as forecasting variables in row 1. Consistent with the in-sample regression results, we find that the augmented model has smaller MSE than the benchmark model of constant stock returns. More importantly, both the ENC-NEW and MSE-F tests reject the null hypothesis that MV and IV provide no information about future stock returns at the 5 percent significance level using both asymptotic and bootstrapping critical values. For comparison, we also add RREL to the forecasting equation (row 2) and the results are mixed. While the augmented model has negligible out-of-sample forecasting power according to the MSE ratio and the MSE-F test, the ENC-NEW test indicates that its predictive power is statistically significant at the 5 percent level. These results might reflect the structural break in the predictive power of RREL, as documented in Table 3.

Figure 3 plots the recursive MSE ratio of the augmented model (row 1 of Table 5) to the benchmark model of constant returns through time. The horizontal axis denotes the starting forecast date—for example, the value corresponding to March 1976 is the MSE ratio over the forecast period 1976:Q1 to 2002:Q4. We choose the range 1968:Q4 to 1997:Q4 for the starting forecast date; therefore, we utilize at least 20 observations for both the in-sample estimation and the calculation of MSE. As shown in Figure 3, except for a few years in the 1980s, the MSE ratio is always less than 1, indicating that IV and MV jointly have strong out-of-sample forecasting power for stock returns. We find very similar results in the MSE-F test, which is closely related to the MSE ratio. Interestingly, the ENC-NEW test indicates that the performance of the augmented model is always significantly better than that of the benchmark model at the 5 percent level.

#### **4. IS IV A PERVASIVE MACROVARIABLE?**

In the preceding section, we document a negative relation between IV and conditional excess stock market returns. This result is somewhat puzzling because it contradicts the non-diversification hypothesis advocated by Levy (1978) and Malkiel and Xu (2001), among others. However, as mentioned in the introduction, it appears to be consistent with equilibrium models, e.g., Guo (2004) and Cao et al. (2005). In this section, we further investigate whether, as suggested by these economic theories, IV is a pervasive macrovariable that captures systematic movements in stock returns.

##### *4.1 Forecasting Excess Returns on Portfolios Formed on IV*

We sort all CRSP stocks into decile portfolios by their realized idiosyncratic volatility in the past quarter; for example, stocks with the highest idiosyncratic volatility are in the first decile and so forth. For each decile portfolio, we also calculate portfolio-specific idiosyncratic volatility,  $IV\_P$ , using all stocks in that portfolio. Table 6 shows that, consistent with Ang et al. (2005), the average return is much lower for the portfolio of stocks with the highest idiosyncratic volatility (decile 1) than the portfolio of stocks with the lowest idiosyncratic volatility (decile 10). Also, the standard deviation of the portfolio return decreases monotonically from decile 1 to decile 10. We run a regression of the portfolio returns on  $MV$ ,  $IV$ , and  $IV\_P$  and report the OLS estimation results at the right part of Table 6. We have also controlled for  $RREL$  and a linear time trend in the forecasting equation; to conserve space, their point estimates are not reported here. It should also be noted that we obtain essentially the same results without these controls. For all ten portfolios,  $IV\_P$  is always insignificant, while  $IV$  is always significant and negative. These results indicate that aggregate  $IV$  is a pervasive macrovariable.

#### 4.2 *Forecasting Value Premium, Size Premium, and Momentum Profit*

Fama and French (1993) show that the CAPM cannot explain the value premium,  $HML$ , and the size premium,  $SMB$ . Also, Fama and French (1996) find that the existing asset pricing models fail to explain Jegadeesh and Titman's (1993) momentum strategy of buying past winners and selling past losers ( $WML$ ). These "anomalies" inspired rapid growth in the behavioral finance literature; however, they might also indicate that the existing theories fail to properly take into account the hedging demand for time-varying investment opportunities, as emphasized by Merton (1973), among others. Specifically, Merton argues that the priced risk factors should include excess stock market returns and the variables that forecast stock market

returns and volatility. Therefore, if (1) the returns on HML, SMB, and WML reflect rational asset pricing and (2) our forecasting variables are proxies for risk factors of a multi-factor or ICAPM model, the latter should have significant forecasting abilities for the former.

We present the OLS regression results in Table 7. As shown in panel A, both IV and MV are strong predictors of HML, with an adjusted R-squared of over 7 percent (row 1). We find very similar results if we use D\_IV in place of IV (row 2) or add a linear time trend to the forecasting equation (row 3). The coefficients on IV and MV have opposite signs to those reported in Table 2 for stock market returns possibly because HML and stock market returns are negatively correlated.

MV is also a significant predictor for WML, as shown in panel C of Table 7, with an adjusted R-squared around 6 percent. MV has a negative coefficient possibly because WML and stock market returns are negatively correlated. We obtain the momentum profit from Ken French at Dartmouth College; Guo (2005) finds the same results using the momentum data constructed by Jegadeesh and Titman (2001) and shows that innovations in MV explain a large portion of the observed momentum profit.

In contrast, panel B of Table 7 shows that our forecasting variables have weak explanatory power for SMB. This last result, however, is not too surprising given that the quarterly average of SMB is an insignificant 0.45 percent in our sample period 1963:Q4 to 2002:Q4, compared with a significant 1.16 percent for HML and a significant 2.75 percent for WML. Overall, our results again indicate that IV is a pervasive macrovariable because it captures systematic movements of HML, which has been interpreted as a hedging factor for time-varying investment opportunities (e.g., Campbell and Vuolteenaho 2004 and Brennan, Wang, and Xia 2004).

#### 4.3 *Forecasting Returns on International Stock Market Indices*

Given that the U.S. equity market is a large portion of the world equity market, IV should also forecast returns on international stock market indices if it is a pervasive macrovariable. Table 8 presents the forecasting results using 18 international stock market indices and a measure of world stock market index, which are obtained from MSCI. The sample spans from 1970:Q1 to 2002:Q4. All the indices are denominated in the U.S. dollar and we use the U.S. risk-free rate to calculate the excess returns for each index. Interestingly, IV is statistically significant at the 5 percent level in all cases. Similarly, MV is significant at the 5 percent level in 11 cases and significant at the 10 percent level in 6 cases. However, RREL appears to be a weak forecasting variable for international stock market returns.

#### 4.4 *IV and Consumption-Wealth Ratio*

Guo (2006) finds a positive risk-return relation by controlling for CAY in the forecasting equation of stock market returns, and his results also suggest an omitted variables problem: While CAY and MV are negatively related to each other, they are positively related to future stock market returns. Hence, the behavior of CAY in the forecasting regression is similar to that we found for IV, suggesting that the two variables may be related. Indeed, as shown in Table 1, IV is strongly correlated with CAY, with a correlation coefficient of  $-0.52$ .

We formally investigate the relation between IV and CAY in Table 9. Row 1 confirms Lettau and Ludvigson's (2001) results that CAY is a strong predictor of excess returns. Consistent with Guo (2006), while MV by itself is insignificant at the 5 percent level (row 2), it becomes highly significant if we also include CAY in the forecasting equation (row 3). We also note that CAY becomes more significant and the adjusted R-squared is much higher in row 3

than in rows 1 and 2. As mentioned above, these results likely reflect an omitted variables problem. Furthermore, we find essentially the same results if we also include RREL in the forecasting equation (row 4). Therefore, CAY has very similar forecasting patterns to those of IV, as reported in Table 2.

To investigate whether forecasting abilities of CAY and IV are related, we include both CAY and IV in the forecasting equation and report the results in row 5 of Table 9. Although IV remains significantly negative, the absolute values of its point estimate and t-value are substantially smaller than those reported in row 5 of Table 2. Similarly, the point estimate and the t-value of CAY attenuate noticeably as well. These results indicate that IV and CAY share at least some information about future stock market returns. However, these results are potentially vulnerable to the criticism of spurious regression because of the deterministic trend in IV. Interestingly, IV becomes insignificant at the 5 percent level if we add a linear time trend to the forecasting equation (row 7); D\_IV is insignificant as well (row 6). In contrast, CAY is always significantly positive in rows 6 and 7. To further investigate this issue, Figure 4 plots the recursive MSE ratio of the model that uses CAY, VAR, RREL, and IV as forecasting variables to the model using only CAY, VAR, and RREL. Again, we find that IV provides little additional information beyond CAY. Therefore, IV forecasts stock market returns mainly because of its negative co-movements with CAY.

#### *4.5. IV and Aggregate Stock Market Liquidity*

In this subsection, we investigate whether IV is related to aggregate liquidity. As mentioned in the introduction, such a relation is consistent with existing theories. For example, Guo (2004) argues that CAY, which is closely related to IV (Table 9), is a proxy for the liquidity

premium. Alternatively, various liquidity measures are closely related to the dispersion of opinion, which is negatively related to conditional excess stock returns in Cao et al. (2005).

Liquidity is a broad and elusive concept that generally denotes the ability to trade large quantities, at low cost, without moving the price (see Pastor and Stambaugh 2003). In the empirical literature, it has been defined in many different ways to capture various aspects of liquidity. To be robust, we investigate whether IV is related to various measures of aggregate liquidity analyzed in Chordia et al. (2001, 2002), which were generously provided to us by Avanidhar Subrahmanyam. One advantage of their measures is that many of them are constructed using the intra-day transaction data from the Institute for Study of Securities Markets (ISSM) and New York Stock Exchange TAQ (trades and automated quotations). However, the data span over a relatively short sample period, 1988 to 2002, and our results should be interpreted with caution. The data are originally available on a daily basis, and we convert them into quarterly data using quarterly averages.

Panel A of Table 10 provides summary statistics of various liquidity measures constructed by Chordia et al. (2001, 2002). There are four measures of bid-ask spread, which are proxies for illiquidity. QSPR is the quoted spread; ESPR is the effective spread; RQSPR is the relative quoted spread; and RESPR is the relative effective spread. There are seven measures of trading activity, which are proxies for liquidity. DEP is depth in thousands of shares, TRVOL is CRSP trading volume in thousands of shares, TURN is CRSP turnover, QP is the number of buy trades, QM is the number of sell trades, SHBUY is shares bought in thousands, and SHSELL is shares sold in thousands. We find that these measures are only moderately correlated with Pastor and Stambaugh's liquidity measure, PSLM. In contrast, they are highly correlated with IV as well as MV and CAY.

Panel B of Table 10 reports the regression results of forecasting one-quarter-ahead excess stock market returns. We always include a linear time trend (not reported in the table) in the regression because Chordia et al. (2001, 2002) show that liquidity (illiquidity) has increased (decreased) over the past decade. To conserve space, we report only results using RESPR (relative effective spread), TURN (turnover), and SHBUY (shares bought in thousands). Nevertheless, as discussed below, we find similar results using the other measures, which are available upon request. We also exclude RREL in the regression because it is statistically insignificant in the recent sample period, as shown in Table 3. Of course, adding RREL to the forecasting equation has little effect on our results.

We first replicate our main findings over the short sample period 1988:Q2 to 2002:Q4. MV, IV, and CAY are insignificant individually, as shown in rows 1 through 3, respectively. However, IV (row 4) and CAY (row 5) become significant when combined with MV. Similarly, MV becomes significant in row 4 and marginally significant in row 5, when combined with IV and CAY, respectively.

Consistent with Jones (2002), we find that the bid-ask spread (RESPR) is positively and significantly related to future excess stock market returns (row 6). However, it becomes insignificant after we control for CAY, with (row 11) and without (row 9) MV in the forecasting equation. Similarly, adding RESPR to the forecasting equation makes CAY insignificant in row 11. Therefore, our results indicate that RESPR and CAY share some similar information about future returns. However, RESPR remains significant after we control for IV (rows 8 and 10). We also find qualitatively similar results using QSPR, ESPR, and RQSPR.

Jones (2002) also finds that turnover (TURN) is negatively related to future stock market returns. We find that TURN is statistically insignificant by itself (row 12); however,



interestingly, it becomes significantly negative when combined with MV, and MV also becomes marginally significant (row 13). In contrast, TURN remains insignificant when combined with IV (row 14) and CAY (row 15). It is insignificant when combined with MV and IV (row 16). However, it is significant when combined with MV and CAY (row 17). Overall, these results indicate that the turnover has some forecasting abilities similar to those of IV and CAY.

SHBUY is negative and marginally significant by itself (row 18). Interestingly, similar to CAY or IV, it becomes highly significant after controlling for MV, and MV becomes highly significantly as well (row 19). In contrast, it becomes insignificant when combined with IV (row 20) and CAY (row 21), and IV and CAY are insignificant as well. It drives out IV (row 22) and CAY (row 23) from the forecasting equation when combined with MV. The latter result indicates that IV and CAY forecast returns mainly because they are proxies for the liquidity premium or the dispersion of opinion. However, it should be interpreted with caution because of the small sample size. In particular, we find that SHBUY forecasts returns mainly because it is highly correlated with the trading volume, which is driven out by CAY in a longer sample from 1963 to 2002 (not reported). Similarly, we find essentially the same results using QP, QM, and SHSELL, which are all highly correlated with the trading volume. Moreover, the order imbalance—the difference between SHBUY and SHSELL—is strongly and positively correlated with the trading volume; it is also a strong predictor of stock market returns when combined with MV. Moreover, we also find that the trading volume forecasts stock market returns when combined with stock market volatility in a longer sample from 1963 to 2002. DEP is not significantly related to future stock market returns, however. We have also investigated Pastor and Stambaugh's liquidity measure, PSLM. Interestingly, we find that PSLM also forecasts stock market returns mainly because of its strong (negative) co-movements with MV; however, it is

only moderately correlated with IV and CAY. Lastly, we find that the liquidity measure proposed by Amihud (2002) does not forecast stock returns over our quarterly sample.

Overall, our results indicate that IV is closely related to some standard liquidity measures.

## **VI. CONCLUSION**

In this paper, we find that the value-weighted idiosyncratic stock volatility is a strong predictor of excess stock market returns when combined with stock market volatility. Contrary to the non-diversification hypothesis, a high level of idiosyncratic volatility is usually associated with low expected future stock returns. Moreover, its forecasting abilities are very similar to those of the consumption-wealth ratio and some standard measures of aggregate stock market liquidity. Overall, our results indicate that IV is a pervasive macrovariable that captures systematic movements in stock returns; in particular, it might be a proxy for volatility of a risk factor of a multi-factor or ICAPM model omitted from the CAPM.

Our results shed light on the out-of-sample stock return predictability, for which recent authors, e.g., Bossaerts and Hillion (1999) and Goyal and Welch (2003), find little support using the conventional forecasting variables. The difference is explained by the fact that our forecasting variables drive out most variables used by the early authors, including the dividend yield, the term premium, and the default premium. We are also able to provide insight in the predictive power of CAY for stock returns, which has been questioned because it has a look-ahead bias and is subject to data revision. Our results suggest that the predictive power of CAY is not spurious because IV—a variable available in real time—contains information about future

stock returns that is very similar to that of CAY. Of course, IV should have more appeal than CAY to practitioners who must rely on real-time data to make portfolio choices.

The analysis in this paper can be extended in several directions. First, our results appear to be consistent with two alternative explanations: (1) IV is a proxy for liquidity risk and (2) IV is a proxy for the dispersion of opinion. However, we do not distinguish the two hypotheses because liquidity and the dispersion of opinion are two closely related empirical concepts. We may use the underlying economic theories to develop more powerful tests to distinguish the two hypotheses in future research.

Second, our results indicate that, in addition to a standard risk component, conditional excess stock market returns have an additional component, which is negatively related to the risk component. These results have an ICAPM interpretation, and it is interesting to investigate whether they can be related to the known CAPM-related anomalies. Also, recent work by Guo (2004) and Cao et al. (2005), among others, provides tentative explanations for our results. However, the fundamental source of this additional risk factor remains uncovered, e.g., we do not know why the aggregate measure of stock market liquidity or the aggregate measure of the dispersion of opinion moves in a persistent manner, as documented in this paper. These issues warrant further investigation, both empirical and theoretical.

Third, the strong relation among idiosyncratic volatility, the consumption-wealth ratio, and aggregate liquidity reveals an important link between general equilibrium theories and market microstructure, as recently emphasized by O'Hara (2003). These two approaches have been carried out separately in the early literature; a joint investigation, however, should greatly improve our understanding of how asset prices are determined.

## REFERENCES

- Acharya, V. and L. Pedersen, 2005, Asset Pricing with Liquidity Risk, *Journal of Financial Economics*, Forthcoming.
- Amihud, Y., 2002, Illiquidity and Stock Returns, *Journal of Financial Markets*, 5, 31-56.
- Andersen, T., T. Bollerslev, F. Diebold, and P. Labys, 2003, Modeling and Forecasting Realized Volatility, *Econometrica*, 71, 579-625.
- Ang, A., R. Hodrick, Y. Xing, and X. Zhang, 2005, The Cross-Section of Volatility and Expected Returns, *Journal of Finance*, Forthcoming.
- Belsley, D., E. Kuh, and R. Welsch, 1980, *Regression Diagnostics: Identifying Influential Data and Sources of Collinearity*, John Wiley and Sons, New York, NY.
- Bossaerts, P., and P. Hillion, 1999, Implementing Statistical Criteria to Select Return Forecasting Models: What Do We Learn?, *Review of Financial Studies*, 12, 405-428.
- Brennan, M., A. Wang, and Y. Xia, 2004, Estimation and Test of a Simple Model of Intertemporal Asset Pricing, *Journal of Finance*, 59, 1743-1775.
- Campbell, J., 1987, Stock Returns and the Term Structure, *Journal of Financial Economics*, 18, 373-399.
- Campbell, J., A. Lo, and C. MacKinlay, 1997, *The Econometrics of Financial Markets*, Princeton University Press, Princeton, NJ.
- Campbell, J., M. Lettau, B. Malkiel, and Y. Xu, 2001, Have Individual Stocks Become More Volatile? An Empirical Exploration of Idiosyncratic Risk, *Journal of Finance*, 56, 1-43.
- Campbell, J. and T. Vuolteenaho, 2004, Bad Beta, Good Beta, *American Economic Review*, 94, 1249-1275.

Cao, H., T. Wang, and H. Zhang, 2005, Model Uncertainty, Limited Market Participation and Asset Prices, *Review of Financial Studies*, Forthcoming.

Chordia, T., R. Roll, and A. Subrahmanyam, 2000, Commonality in Liquidity, *Journal of Financial Economics*, 56, 3-28.

Chordia, T., R. Roll, and A. Subrahmanyam, 2001, Market Liquidity and Trading Activities, *Journal of Finance*, 56, 501-530.

Chordia, T., R. Roll, and A. Subrahmanyam, 2002, Order Imbalance, Liquidity and Market Returns, *Journal of Financial Economics*, 65, 111-130.

Clark, T., and M. McCracken, 2001, Tests of Equal Forecast Accuracy and Encompassing for Nested Models, *Journal of Econometrics*, 2001, 105, 85-110.

Diether, K., C. Malloy, and A. Scherbina, 2002, Differences of Opinion and the Cross Section of Stock Returns, *Journal of Finance*, 57, 2113-2141.

Easley, D., S. Hvidkjaer, and M. O'Hara, 2002, Is Information Risk a Determinant of Asset Returns? *Journal of Finance*, 57, 2185-2221.

Fama, E., and K. French, 1993, Common Risk Factors in the Returns on Stocks and Bonds, *Journal of Financial Economics*, 33, 3-56.

Fama, E., and K. French, 1996, Multifactor Explanations of Asset Pricing Anomalies, *Journal of Finance*, 51, 55-84.

Ferson, W., S. Sarkissian, and T. Simin, 2003, Spurious Regressions in Financial Economics?, *Journal of Finance*, 58, 1393-1414.

French, K., W. Schwert, and R. Stambaugh, 1987, Expected Stock Returns and Volatility, *Journal of Financial Economics*, 19, 3-29.

Ghysels, E., P. Santa-Clara, and R. Valkanov, 2005, There Is a Risk-Return Tradeoff After All, *Journal of Financial Economics*, Forthcoming.

Glosten, L., R. Jagannathan, and D. Runkle, 1993, On the Relation between the Expected Value and the Volatility of the Nominal Excess Return on Stocks, *Journal of Finance*, 48, 1779-1801.

Goyal, A. and P. Santa-Clara, 2003, Idiosyncratic Risk Matters!, *Journal of Finance*, 58, 975-1007.

Goyal, A., and I. Welch, 2003, Predicting the Equity Premium with Dividend Ratios, *Management Science*, 49, 639-654.

Greene, W., 1997, *Econometric Analysis*, Third Edition, Prentice Hall, Upper Saddle River, NJ.

Guo, H., 2004. Limited Stock Market Participation and Asset Prices in a Dynamic Economy. *Journal of Financial and Quantitative Analysis* 39, 495-516.

Guo, H., 2005, Time-Varying Risk Premia and the Cross Section of Stock Returns, *Journal of Banking and Finance*, Forthcoming.

Guo, H., 2006. On the Out-of-Sample Predictability of Stock Market Returns, *Journal of Business* 79, Forthcoming.

Guo, H., Whitelaw, R., 2005. Uncovering the Risk-Return Relation in the Stock Market. *Journal of Finance*, Forthcoming.

Harrison, P. and H. Zhang, 1999, An Investigation of the Risk and Return Relation at Long Horizons, *Review of Economics and Statistics*, 81, 399-408.

Hasbrouck, J. and D. Seppi, 2001, Common Factors in Prices, Order Flows, and Liquidity, *Journal of Financial Economics*, 59, 383-411.

Hong, H. and J. Stein, 2003, Differences of Opinion, Short-Sales Constraints and Market Crashes, *Review of Financial Studies*, 16, 487-525.

Huberman, G. and D. Halka, 2001, Systematic Liquidity, *Journal of Financial Research*, 24, 161-178.

Inoue, A., and L. Kilian, 2004, In-Sample or Out-of-Sample Tests of Predictability: Which One Should We Use?, *Econometric Reviews*, 23, 371-402.

Jegadeesh, N., and S. Titman, 1993, Returns to Buying Winners and Selling Losers: Implications for Stock Market Efficiency, *Journal of Finance*, 48, 65-91.

Jegadeesh, N., and S. Titman, 2001, Profitability of Momentum Strategies: An Evaluation of Alternative Explanations, *Journal of Finance*, 56, 699-720.

Jones, C., 2002, A Century of Stock Market Liquidity and Trading Costs, Unpublished Working Paper, Columbia University.

Lanne, M., 2002, Testing the Predictability of Stock Returns, *Review of Economics and Statistics*, 84, 407-415.

Lehmann, B., 1990, Residual Risk Revisited, *Journal of Econometrics*, 45, 71-97.

Lettau, M. and S. Ludvigson, 2001, Consumption, Aggregate Wealth, and Expected Stock Returns, *Journal of Finance*, 56, 815-49.

Levy, H., 1978, Equilibrium in an Imperfect Market: A Constraint on the Number of Securities in the Portfolio, *American Economic Review*, 68, 643-58.

McCracken, M., 1999, Asymptotics for Out-of-Sample Tests of Causality, Unpublished Working Paper, Louisiana State University.

Malkiel, B. and Y. Xu, 2001, Idiosyncratic Risk and Security Returns, Unpublished Working Paper, University of Texas at Dallas.

Miller, E., 1977, Risk, Uncertainty, and Divergence of Opinion, *Journal of Finance*, 32, 1151-1168.

Merton, R., 1973, An Intertemporal Capital Asset Pricing Model, *Econometrica*, 41, 867-87.

Merton, R., 1980, On Estimating the Expected Return on the Market: An Exploratory Investigation, *Journal of Financial Economics*, 8, 323-61.

O'Hara, M., 2003, Presidential Address: Liquidity and Price Discovery, *Journal of Finance*, 58, 1335-1354.

Pastor, L., and R. Stambaugh, 2003, Liquidity Risk and Expected Stock Returns, *Journal of Political Economy*, 111, 642-685.

Pesaran, M., and A. Timmermann, 1995, Predictability of Stock Returns: Robustness and Economic Significance, *Journal of Finance*, 50, 1201-28.

Schwert, W., 1990, Stock Volatility and the Crash of '87, *Review of Financial Studies*, 3, 77-102.

Scruggs, J., 1998, Resolving the Puzzling Intertemporal Relation Between the Market Risk Premium and Conditional Market Variance: A Two Factor Approach, *Journal of Finance*, 53, 575-603.

Seyhun, N., 1990, Overreaction or Fundamentals: Some Lessons from Insiders' Response to the Market Crash of 1987, *Journal of Finance*, 45, 1363-1388.

Wei, S. and C. Zhang, 2006, Why Did Individual Stocks Become More Volatile?, *Journal of Business*, 79, Forthcoming.

Whitelaw, R., 1994, Time Variations and Covariations in the Expectation and Volatility of Stock Market Returns, *Journal of Finance*, 49, 515-541.

Xu, Y. and B. Malkiel, 2003, Investigating the Behavior of Idiosyncratic Volatility, *Journal of Business*, 76, 613-644.



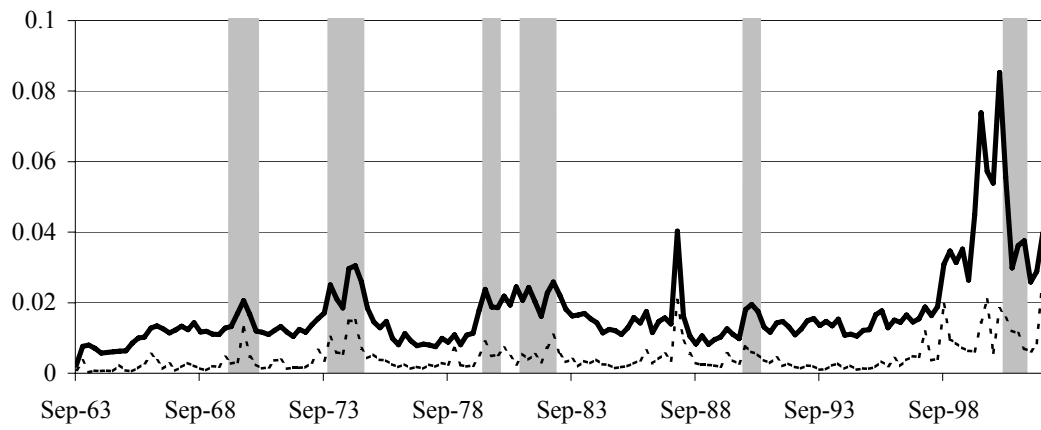


Figure 1. Idiosyncratic Volatility (Solid Line) and Stock Market Volatility (Dashed Line)

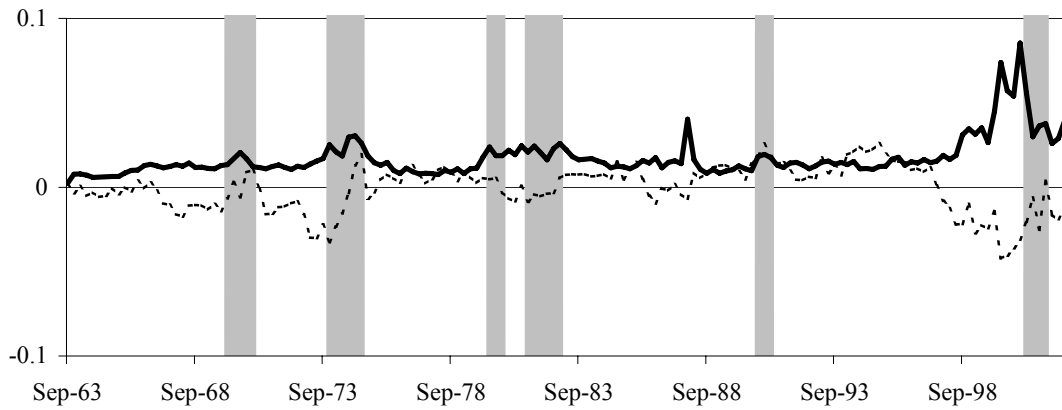


Figure 2. Idiosyncratic Volatility (Solid Line) and the Consumption-Wealth Ratio (Dashed Line)

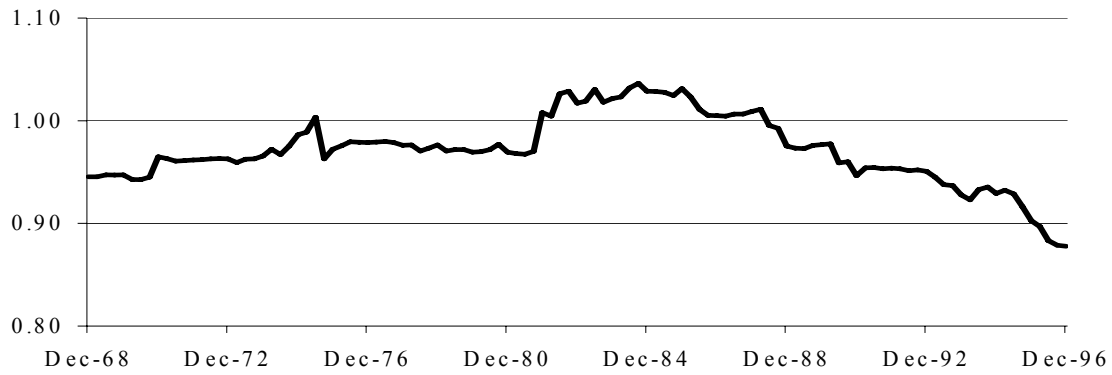


Figure 3. Recursive MSE Ratio of Augmented Model to Benchmark Model (Table 5)

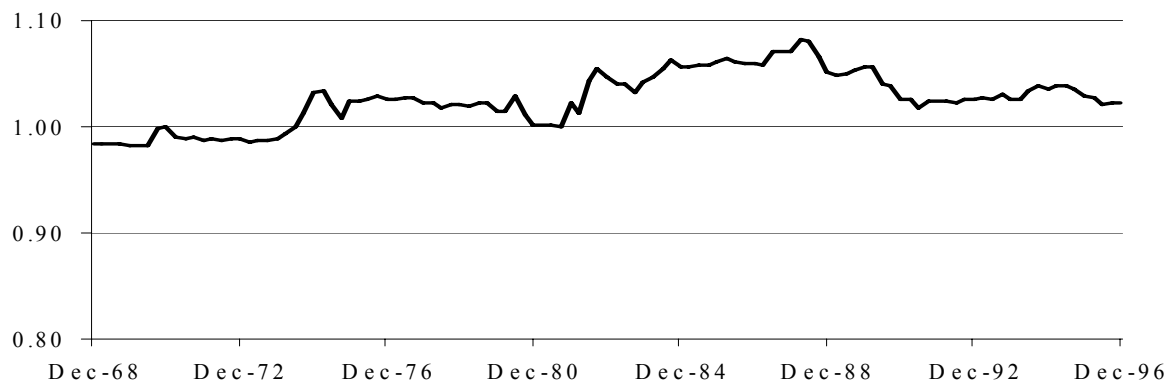


Figure 4. Recursive MSE Ratio of Model with IV to Model without IV (Table 9)

Table 1. Summary Statistics: 1963:Q4 - 2002:Q4

Note: We report summary statistics for excess stock market return,  $ER_t$ ; stock market volatility,  $MV_t$ ; idiosyncratic volatility  $IV_t$ ; detrended idiosyncratic volatility,  $D\_IV_t$ ; the consumption-wealth ratio,  $CAY_t$ ; and the stochastically detrended risk-free rate,  $RREL_t$ . To construct  $IV_t$ , we use the FF model to control for the systematic risk and use only the largest 500 stocks in the CRSP stock files.

	$ER_t$	$MV_t$	$IV_t$	$D\_IV_t$	$CAY_t$	$RREL_t$
Panel A: Correlation Matrix						
$ER_t$	1.00					
$MV_t$	-0.39	1.00				
$IV_t$	-0.19	0.77	1.00			
$D\_IV_t$	-0.23	0.67	0.87	1.00		
$CAY_t$	0.32	-0.41	-0.52	-0.65	1.00	
$RREL_t$	-0.26	-0.11	-0.09	-0.01	-0.10	1.00
Panel B: Univariate Statistics						
Mean	0.013	0.005	0.017	0.000	-0.001	-0.000
Standard Deviation	0.087	0.004	0.012	0.010	0.014	0.003
Autocorrelation	0.03	0.56	0.83	0.77	0.84	0.72

Table 2. Forecasting Quarterly Excess Stock Market Returns: Full Sample

Note: We report the OLS regression results of the one-quarter-ahead excess stock market return on some predetermined variables. The heteroskedasticity-corrected t-statistics are in parentheses and bold denotes significance at the 5 percent level.  $MV_t$  is stock market volatility;  $IV_t$  is idiosyncratic volatility;  $D_{-}IV_t$  is detrended realized idiosyncratic volatility;  $RREL_t$  is the stochastically detrended risk-free rate, and  $Trend_t$  is a linear time trend. We make a downward adjustment for MV of 1987:Q4 in panel A and use the raw MV in panels B, C, and D. We include an additional variable in panel C: the product of MV with a dummy variable, which is equal to 1 for 1987:Q4 and 0 otherwise. The column MV has four numbers in panel C: The top (bottom) two numbers are point estimate and t-value, respectively, for MV (the 1987:Q4 dummy). We use log transformation of IV and MV in panel D. The sample spans from 1963:Q4 to 2002:Q4.

	$MV_t$	$IV_t$	$D_{-}IV_t$	$RREL_t$	$Trend_t$	$\bar{R}^2$
Panel A: Adjusted MV						
1	2.907 (1.681)					0.015
2		-0.632 (-1.070)				0.007
3				<b>-5.714</b> <b>(-2.439)</b>		0.033
4	<b>10.306</b> <b>(4.686)</b>	<b>-3.611</b> <b>(-5.361)</b>				0.104
5	<b>9.894</b> <b>(4.582)</b>	<b>-3.614</b> <b>(-5.539)</b>		<b>-5.322</b> <b>(-2.485)</b>		0.133
6	<b>7.326</b> <b>(3.658)</b>		<b>-3.081</b> <b>(-4.110)</b>	<b>-4.606</b> <b>(-2.118)</b>		0.107
7	<b>9.913</b> <b>(4.517)</b>	<b>-3.828</b> <b>(-5.333)</b>		<b>-5.120</b> <b>(-2.424)</b>	0.000 (0.663)	0.130
Panel B: Raw MV						
8	1.654 (1.877)					0.009
9	3.621 (1.968)	<b>-1.870</b> <b>(-2.694)</b>				0.043
10	3.449 (1.947)	<b>-1.941</b> <b>(-3.044)</b>		<b>-5.649</b> <b>(-2.534)</b>		0.076
11	<b>3.116</b> <b>(2.147)</b>		<b>-2.058</b> <b>(-2.965)</b>	<b>-5.121</b> <b>(-2.271)</b>		0.074
12	<b>3.491</b> <b>(1.987)</b>	<b>-2.189</b> <b>(-3.136)</b>		<b>-5.420</b> <b>(-2.448)</b>	0.000 (0.717)	0.073

Table 2. Continued

Panel C: Raw MV with the Crash Dummy					
13	<b>10.545</b> (4.348) <b>-7.828</b> (-3.709)	<b>-3.647</b> (-5.267)			0.092
14	<b>10.137</b> (4.258) <b>-7.551</b> (-3.641)	<b>-3.651</b> (-5.439)	<b>-5.324</b> (-2.478)		0.128
15	<b>7.362</b> (3.403) <b>-5.238</b> (-2.756)	<b>-3.084</b> (-4.085)	<b>-4.606</b> (-2.118)		0.102
16	<b>10.132</b> (4.187) <b>-7.503</b> (-3.557)	<b>-3.855</b> (-5.256)	<b>-5.128</b> (-2.428)	0.000 (0.644)	0.125
Panel D: Log Transformation of Raw MV and IV					
17	0.011 (1.465)				0.005
18		-0.009 (-0.635)			-0.005
19	<b>0.041</b> (3.947)	<b>-0.060</b> (-3.471)			0.048
20	<b>0.041</b> (4.057)	<b>-0.067</b> (-4.089)	<b>-6.146</b> (-2.833)		0.087
21	<b>0.027</b> (2.926)		<b>-0.054</b> (-2.645)	<b>-5.443</b> (-2.461)	0.068
22	<b>0.041</b> (4.036)	<b>-0.072</b> (-3.768)	<b>-6.030</b> (-2.813)	0.000 (0.537)	0.083

Table 3. Forecasting Quarterly Excess Stock Market Returns: Subsamples

Note: We report the OLS regression results of the one-quarter-ahead excess stock market return on some predetermined variables. The heteroskedasticity-corrected t-statistics are in parentheses and bold denotes significance at the 5 percent level.  $MV_t$  is stock market volatility;  $IV_t$  is idiosyncratic volatility;  $D\_IV_t$  is detrended idiosyncratic volatility;  $RREL_t$  is the stochastically detrended risk-free rate, and  $Trend_t$  is a linear time trend.

	$MV_t$	$IV_t$	$D\_IV_t$	$RREL_t$	$Trend_t$	$\bar{R}^2$
Panel A: 1963:Q4 - 1982:Q4						
1	<b>9.553</b> <b>(3.116)</b>					0.092
2		0.919 (0.425)				0.010
3				<b>-7.660</b> <b>(-2.450)</b>		0.071
4	<b>22.819</b> <b>(5.792)</b>	<b>-8.389</b> <b>(-3.614)</b>				0.192
5	<b>23.882</b> <b>(7.011)</b>	<b>-9.080</b> <b>(-4.396)</b>		<b>-8.450</b> <b>(-3.326)</b>		0.286
6	<b>18.773</b> <b>(5.272)</b>		<b>-7.364</b> <b>(-2.989)</b>	<b>-8.629</b> <b>(-3.334)</b>		0.237
7	<b>24.128</b> <b>(6.912)</b>	<b>-9.569</b> <b>(-3.939)</b>		<b>-8.567</b> <b>(-3.352)</b>	0.000 (0.504)	0.278
Panel B: 1983:Q1 - 2002:Q4						
8	0.640 (0.324)					-0.011
9		-1.120 (-1.911)				0.023
10				-2.244 (-0.648)		-0.008
11	<b>6.899</b> <b>(3.246)</b>	<b>-2.992</b> <b>(-4.347)</b>				0.089
12	<b>6.802</b> <b>(3.216)</b>	<b>-2.967</b> <b>(-4.293)</b>		-0.755 (-0.239)		0.077
13	<b>6.149</b> <b>(2.707)</b>		<b>-3.008</b> <b>(-3.995)</b>	-1.152 (-0.350)		0.066
14	<b>6.819</b> <b>(3.262)</b>	<b>-2.909</b> <b>(-3.733)</b>		-0.703 (-0.217)	-0.000 (-0.142)	0.065

Table 4. Alternative Measures of Idiosyncratic Volatility

Note: We report the OLS regression results of the one-quarter-ahead excess stock market return on various alternative measures of idiosyncratic volatility. The heteroskedasticity-corrected t-statistics are in parentheses and bold denotes significance at the 5 percent level. Unless otherwise indicated, we calculate idiosyncratic volatility using all CRSP stocks through value weighting. We use the raw return in equation (1) to calculate average stock volatility,  $VWAV_t$  (panel A); use the idiosyncratic shock based on the CAPM for  $VWIV\_M_t$  (panel B); and use idiosyncratic volatility based on the FF model for  $VWIV\_FF_t$  (panel C).  $EVAV_t$  is the monthly equal-weighted average stock volatility used by Goyal and Santa-Clara (2003). We convert  $EVAV_t$  into the quarterly data by taking only last month's observation for each quarter.  $MV_t$  is stock market volatility and  $RREL_t$  is the stochastically detrended risk-free rate.

	$VWAV_t$	$VWIV\_M_t$	$VWIV\_FF_t$	$EVAV_t$	$MV_t$	$RREL_t$	$\bar{R}^2$
Panel A: Value-Weighted Average Stock Volatility: 1963:Q1 to 2002:Q4							
1	-0.073 (-0.219)						-0.006
2	<b>-2.334</b> <b>(-4.516)</b>				<b>13.253</b> <b>(4.244)</b>		0.095
3	<b>-2.327</b> <b>(-4.730)</b>				<b>12.807</b> <b>(4.218)</b>	<b>-5.241</b> <b>(-2.434)</b>	0.122
Panel B: Value-Weighted Idiosyncratic Volatility Based on the CAPM: 1963:Q4 to 2002:Q4							
4		-0.352 (-0.803)					-0.003
5		<b>-2.507</b> <b>(-4.481)</b>			<b>9.673</b> <b>(4.222)</b>		0.086
6		<b>-2.482</b> <b>(-4.623)</b>			<b>9.197</b> <b>(4.103)</b>	<b>-5.186</b> <b>(-2.379)</b>	0.113
Panel C: Value-Weighted Idiosyncratic Volatility Based on the FF Model: 1963:Q4 to 2002:Q4							
7			-0.358 (-0.705)				-0.003
8			<b>-2.750</b> <b>(-4.490)</b>		<b>9.753</b> <b>(4.269)</b>		0.084
9			<b>-2.775</b> <b>(-4.786)</b>		<b>9.391</b> <b>(4.188)</b>	<b>-5.419</b> <b>(-2.494)</b>	0.114
Panel D: Equal-Weighted Average Stock Volatility: 1962:Q3 to 1999:Q4							
10				<b>1.297</b> <b>(3.066)</b>			0.043
11				0.590 (1.327)	<b>6.230</b> <b>(2.974)</b>		0.082
12				0.283 (0.611)	<b>6.325</b> <b>(3.067)</b>	<b>-5.514</b> <b>(-2.404)</b>	0.112

Table 5. Tests of Out-of-Sample Forecast Performance

Note: We assume that excess stock market returns are constant in the benchmark model and augment the benchmark model with  $MV_t$  and  $IV_t$  in row 1 and with  $MV_t$ ,  $IV_t$ , and  $RREL_t$  in row 2.  $MV_t$  is stock market volatility;  $IV_t$  is idiosyncratic volatility; and  $RREL_t$  is the stochastically detrended risk-free rate. We report three out-of-sample forecast tests: (1) the mean-squared forecasting error (MSE) ratio of the augmented model to the benchmark model,  $MSE_A/MSE_B$ ; (2) the encompassing test ENC-NEW developed by Clark and McCracken (2001); and (3) the equal forecast accuracy test MSE-F developed by McCracken (1999). ENC-NEW tests the null hypothesis that the benchmark model encompasses all the relevant information about the next quarter's excess stock market return, against the alternative hypothesis that the predetermined variables provide additional information. MSE-F tests the null hypothesis that the benchmark model has a MSE less than or equal to the augmented model, against the alternative hypothesis that the augmented model has smaller MSE. We use observations over the period 1963:Q4 to 1976:Q4 for the initial in-sample estimation and then generate forecasts recursively for stock returns over the period 1977:Q1 to 2002:Q4. The Asy. CV column reports the asymptotic 95 percent critical values provided by Clark and McCracken (2001) and McCracken (1999). The BS. CV column reports the empirical 95 percent critical values obtained from the bootstrapping, as in Lettau and Ludvigson (2001). In particular, we first estimate a VAR (1) process of excess stock market returns and its forecasting variables with the restrictions under the null hypothesis. We then feed the saved residuals with replacements to the estimated VAR system, of which we set the initial values to their unconditional means. The ENC-NEW and MSE-F statistics are calculated using the simulated data and the whole process is repeated 10,000 times.

	Models	$MSE_A /$ $MSE_B$	ENC-NEW			MSE-F		
			Statistic	Asy. CV	BS. CV	Statistic	Asy. CV	BS. CV
1	C+ $MV_t$ + $IV_t$ vs. C	0.98	16.97	2.09	3.14	2.19	1.52	1.29
2	C+ $MV_t$ + $IV_t$ + $RREL_t$ vs. C	1.04	20.89	3.56	3.69	-3.52	1.61	0.96



Table 6. Forecasting Excess Returns on Portfolios Sorted by Past Idiosyncratic Volatility

Note: We sort CRSP stocks into decile portfolios by their realized idiosyncratic volatility in the past quarter. For example, the first decile is the portfolio of stocks with the highest idiosyncratic volatility and so forth. The heteroskedasticity-corrected t-statistics are in parentheses and bold denotes significance at the 5 percent level.  $MV_t$  is stock market volatility,  $IV_t$  is idiosyncratic volatility, and  $IV\_P_t$  is the portfolio-specific idiosyncratic volatility. We also control for the stochastically detrended risk-free rate,  $RREL_t$ , and a linear time trend in the forecasting equation. The sample spans from 1963:Q4 to 2002:Q4.

Portfolios	Mean	Standard Deviation	Forecasting Portfolio Returns			
			$MV_t$	$IV_t$	$IV\_P_t$	$\bar{R}^2$
1(highest)	-0.024	0.194	<b>25.832</b> (5.832)	<b>-8.473</b> (-5.583)	-0.022 (-0.157)	0.138
2	-0.004	0.175	<b>20.826</b> (5.055)	<b>-7.072</b> (-3.221)	-0.048 (-0.079)	0.103
3	0.005	0.158	<b>19.222</b> (4.680)	<b>-6.843</b> (-2.997)	-0.178 (-0.214)	0.122
4	0.011	0.135	<b>13.534</b> (3.773)	<b>-3.734</b> (-2.156)	-1.271 (-1.320)	0.111
5	0.017	0.123	<b>12.769</b> (3.659)	<b>-3.187</b> (-2.067)	-1.393 (-1.074)	0.095
6	0.018	0.107	<b>11.851</b> (3.985)	<b>-2.861</b> (-2.465)	-1.640 (-1.204)	0.112
7	0.015	0.094	<b>9.032</b> (3.703)	<b>-2.991</b> (-3.083)	-0.856 (-0.570)	0.078
8	0.015	0.084	<b>9.290</b> (3.732)	<b>-3.064</b> (-4.175)	-1.748 (-0.958)	0.119
9	0.017	0.076	<b>7.648</b> (3.686)	<b>-2.922</b> (-3.783)	-0.294 (-0.109)	0.099
10(lowest)	0.013	0.071	<b>6.124</b> (3.137)	<b>-2.340</b> (-3.234)	1.563 (0.335)	0.063

Table 7. Forecasting Portfolio Returns: 1963:Q4 – 2002:Q4

Note: We report the OLS estimation results of the one-quarter-ahead portfolio returns on some predetermined variables. HML is the return on a portfolio that is long in stocks with high book-to-market value ratios and short in stocks with low book-to-market value ratios. SMB is the return on a portfolio that is long in small stocks and short in big stocks. WML is the return on a portfolio that is long in past winners and short in past losers. The heteroskedasticity-corrected t-statistics are in parentheses and bold denotes significance at the 5 percent level.  $MV_t$  is stock market volatility;  $IV_t$  is idiosyncratic volatility;  $D\_IV_t$  is detrended idiosyncratic volatility;  $RREL_t$  is the stochastically detrended risk-free rate; and  $Trend_t$  is a linear time trend.

	$MV_t$	$IV_t$	$D\_IV_t$	$RREL_t$	$Trend_t$	$\bar{R}^2$
Panel A: HML						
1	<b>-4.415</b> (-2.238)	<b>2.084</b> (2.487)		<b>3.080</b> (2.259)		0.076
2	<b>-3.246</b> (-2.108)		<b>1.975</b> (2.788)	2.622 (1.890)		0.069
3	<b>-4.435</b> (-2.264)	<b>2.319</b> (2.789)		<b>2.859</b> (2.124)	-0.000 (-1.155)	0.076
Panel B: SMB						
4	1.764 (1.019)	-0.123 (-0.224)		-2.379 (-1.586)		0.012
5	0.247 (0.174)		0.806 (1.509)	-2.562 (-1.694)		0.022
6	1.720 (1.068)	0.381 (0.718)		-2.855 (-1.936)	-0.000 (-2.232)	0.036
Panel C: WML						
7	<b>-5.873</b> (-2.678)	0.698 (0.938)		-1.573 (-0.717)		0.061
8	<b>-3.889</b> (-2.029)		-0.354 (-0.636)	-1.495 (-0.690)		0.057
9	<b>-5.830</b> (-2.769)	0.207 (0.307)		-1.109 (-0.521)	0.000 (1.883)	0.074

Table 8. Forecasting Quarterly Returns on International Stock Market Indices

Note: We report the OLS estimation results of the one-quarter-ahead excess returns on the international stock market indices constructed by MSCI. The heteroskedasticity-corrected t-statistics are in parentheses and bold denotes significance at the 5 percent level.  $MV_t$  is stock market volatility;  $IV_t$  is idiosyncratic volatility; and  $RREL_t$  is the stochastically detrended risk-free rate. The sample spans from 1970:Q1 to 2002:Q4.

Country	$MV_t$	$IV_t$	$RREL_t$	$\bar{R}^2$
Australia	<b>7.467</b> ( <b>2.640</b> )	<b>-2.218</b> ( <b>-2.201</b> )	-3.179 (-1.033)	0.021
Austria	4.336 (1.748)	<b>-2.527</b> ( <b>-2.362</b> )	-1.204 (-0.356)	0.010
Belgium	<b>9.280</b> ( <b>2.835</b> )	<b>-3.825</b> ( <b>-3.135</b> )	-3.202 (-0.959)	0.071
Canada	<b>8.905</b> ( <b>3.526</b> )	<b>-3.127</b> ( <b>-2.514</b> )	-1.529 (-0.557)	0.061
Denmark	<b>4.274</b> ( <b>2.199</b> )	<b>-2.219</b> ( <b>-3.686</b> )	-4.597 (-1.648)	0.030
France	6.685 (1.962)	<b>-3.351</b> ( <b>-3.026</b> )	-3.001 (-0.765)	0.027
Germany	<b>6.004</b> ( <b>2.333</b> )	<b>-3.391</b> ( <b>-4.191</b> )	-3.910 (-1.317)	0.047
Hong Kong	<b>5.706</b> ( <b>1.116</b> )	<b>-3.697</b> ( <b>-3.043</b> )	-8.312 (-1.532)	0.016
Italy	6.504 (1.704)	<b>-2.997</b> ( <b>-2.401</b> )	-1.334 (-0.344)	0.005
Japan	2.194 (0.573)	<b>-2.135</b> ( <b>-2.133</b> )	<b>-6.560</b> ( <b>-2.073</b> )	0.026
Netherlands	<b>6.921</b> ( <b>2.558</b> )	<b>-3.188</b> ( <b>-3.190</b> )	-5.073 (-1.751)	0.074
Norway	4.493 (1.593)	<b>-2.129</b> ( <b>-2.247</b> )	2.714 (0.548)	0.008
Singapore	12.481 (1.793)	<b>-4.417</b> ( <b>-2.696</b> )	-5.788 (-1.415)	0.034
Spain	<b>8.509</b> ( <b>2.573</b> )	<b>-3.376</b> ( <b>-3.542</b> )	0.655 (0.257)	0.022
Sweden	<b>9.035</b> ( <b>3.075</b> )	<b>-3.832</b> ( <b>-2.858</b> )	-4.956 (1.477)	0.054
Switzerland	3.876 (1.167)	<b>-2.603</b> ( <b>-1.975</b> )	-4.289 (-1.339)	0.036
UK	8.666 (1.841)	<b>-3.788</b> ( <b>-3.503</b> )	-6.111 (-1.946)	0.068
US	<b>8.761</b> ( <b>4.262</b> )	<b>-3.340</b> ( <b>-5.564</b> )	<b>-5.007</b> ( <b>-2.475</b> )	0.126
World	<b>7.784</b> ( <b>3.603</b> )	<b>-3.158</b> ( <b>-4.948</b> )	<b>-4.827</b> ( <b>-2.324</b> )	0.111

Table 9. Idiosyncratic Volatility and Consumption-Wealth Ratio

Note: We report the OLS regression results of the one-quarter-ahead excess stock market return on some predetermined variables. The heteroskedasticity-corrected t-statistics are in parentheses and bold denotes significance at the 5 percent level.  $MV_t$  is stock market volatility;  $IV_t$  is idiosyncratic volatility;  $D\_IV_t$  is detrended idiosyncratic volatility;  $RREL_t$  is the stochastically detrended risk-free rate;  $Trend_t$  is a linear time trend; and  $CAY_t$  is the consumption-wealth ratio. The sample spans from 1963:Q4 to 2002:Q4.

	$MV_t$	$IV_t$	$D\_IV_t$	$RREL_t$	$Trend_t$	$CAY_t$	$\bar{R}^2$
1						<b>1.704</b> <b>(3.410)</b>	0.066
2	2.907 (1.681)						0.015
3	<b>6.110</b> <b>(3.770)</b>					<b>2.498</b> <b>(5.067)</b>	0.139
4	<b>5.630</b> <b>(3.528)</b>			-3.760 (-1.737)		<b>2.354</b> <b>(4.766)</b>	0.150
5	<b>10.077</b> <b>(4.429)</b>	<b>-2.528</b> <b>(-3.326)</b>		<b>-4.129</b> <b>(-1.995)</b>		<b>1.806</b> <b>(3.462)</b>	0.186
6	<b>7.156</b> <b>(3.432)</b>		-1.352 (-1.121)	-3.746 (-1.760)		<b>1.907</b> <b>(2.641)</b>	0.154
7	<b>10.075</b> <b>(4.449)</b>	-2.067 (-1.938)		<b>-4.263</b> <b>(-2.102)</b>	-0.000 (-0.766)	<b>2.051</b> <b>(2.898)</b>	0.185

Table 10. Idiosyncratic Volatility and Aggregate Liquidity Measures

Note: Panel A presents summary statistics. We report the OLS regression results of the one-quarter-ahead excess stock market return on some predetermined variables in panel B. We also control for a linear time trend in the forecasting equation, which is not reported here. The heteroskedasticity-corrected t-statistics are in parentheses and bold denotes significance at the 5 percent level.

$PSLM_t$  is Pastor and Stambaugh's (2003) liquidity measure;  $MV_t$  is realized stock market volatility;  $IV_t$  is realized idiosyncratic volatility;  $RREL_t$  is the stochastically detrended risk-free rate; and  $CAY_t$  is the consumption-wealth ratio. The other liquidity measures are the same as those used in Chordia et al. (2001, 2002). There are four measures of bid-ask spread, which are proxies for *illiquidity*. QSPR is quoted spread; ESPR is effective spread; RQSPR is relative quoted spread; RESPR is relative effective spread. There are seven measures of trading activities, which are proxies for *liquidity*. DEP is depth in thousands of shares, TRVOL is CRSP trading volume in thousands of shares, TURN is CRSP turnover, QP is number of buy trades, QM is number of sell trades, SHBUY is shares bought in thousands, and SHSELL is shares sold in thousands. The sample spans from 1988:Q2 to 2002:Q4.

\*: Scaled by 100.

Panel A. Summary Statistics

Liquidity Measures	Mean	Standard Deviation	Cross-Correlation with				
			$PSLM_t$	$MV_t$	$IV_t$	$RREL_t$	$CAY_t$
QSPR	0.164	0.051	0.122	-0.592	-0.583	0.311	0.646
ESPR	0.110	0.034	0.111	-0.612	-0.637	0.359	0.676
RQSPR	0.004	0.001	0.128	-0.560	-0.580	0.310	0.724
RESPR	0.003	0.000	0.122	-0.579	-0.623	0.354	0.750
DEP	9.032	3.388	0.257	-0.621	-0.437	0.490	0.653
TRVOL	1919.532	1970.532	-0.147	0.752	0.805	-0.276	-0.742
TURN	0.003	0.001	-0.202	0.757	0.785	-0.181	-0.732
QP	571.536	553.378	-0.130	0.754	0.830	-0.268	-0.800
QM	501.361	482.190	-0.137	0.759	0.837	-0.240	-0.793
SHBUY	920.866	963.532	-0.151	0.755	0.801	-0.282	-0.741
SHSELL	793.699	810.946	-0.150	0.752	0.810	-0.272	-0.752

Table 10 (continued)

## Panel B. Forecasting One-Quarter-Ahead Excess Stock Market Returns

	RESPR	TURN	SHBUY	$MV_t$	$IV_t$	$CAY_t$	$\bar{R}^2$
1				2.302 (0.917)			0.006
2					-1.322 (-1.636)		0.027
3						1.185 (1.669)	0.026
4				<b>6.705</b> <b>(2.734)</b>	<b>-2.856</b> <b>(-3.074)</b>		0.103
5				5.095 (1.876)		<b>2.037</b> <b>(2.440)</b>	0.073
6	<b>65.683</b> <b>(2.174)</b>						0.065
7	<b>66.586</b> <b>(2.179)</b>			2.439 (0.950)			0.068
8	<b>73.127</b> <b>(2.524)</b>				-1.603 (-1.943)		0.103
9	56.681 (1.587)					0.653 (0.738)	0.059
10	<b>84.426</b> <b>(3.031)</b>			<b>7.747</b> <b>(3.231)</b>	<b>-3.419</b> <b>(-3.705)</b>		0.212
11	46.811 (1.291)			4.439 (1.636)		1.488 (1.466)	0.089
12		-24.643 (-1.160)					0.008
13		<b>-65.280</b> <b>(-2.324)</b>		6.187 (1.895)			0.064
14		-7.870 (-0.280)			-1.171 (-1.043)		0.011
15		-12.912 (-0.489)				1.020 (1.117)	0.013
16		-48.498 (-1.672)		<b>8.939</b> <b>(3.337)</b>	<b>-2.433</b> <b>(-2.424)</b>		0.126
17		<b>-57.801</b> <b>(-2.059)</b>		<b>8.252</b> <b>(2.757)</b>		<b>1.831</b> <b>(2.154)</b>	0.115
18			-0.004* (-1.810)				0.063
19			<b>-0.085*</b> <b>(-3.403)</b>	<b>8.113</b> <b>(3.182)</b>			0.181
20			-0.004* (-1.144)		-0.392 (-0.313)		0.048
21			-0.004* (-1.231)			0.594 (0.605)	0.054
22			<b>-0.007*</b> <b>(-2.561)</b>	<b>9.980</b> <b>(5.035)</b>	-1.827 (-1.929)		0.209
23			<b>-0.008*</b> <b>(-3.102)</b>	<b>9.721</b> <b>(4.179)</b>		1.544 (1.799)	0.214