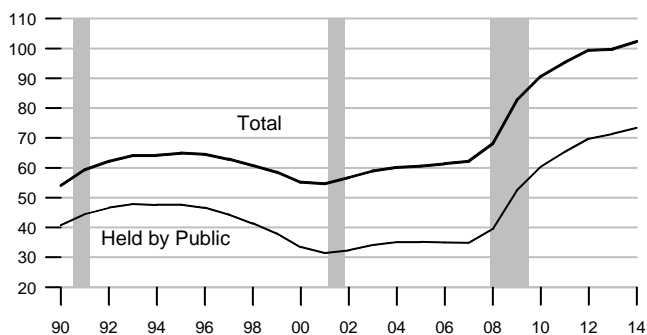


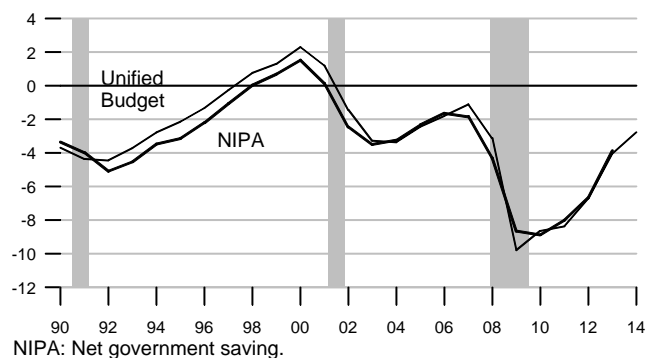
Federal Debt

Percent of GDP



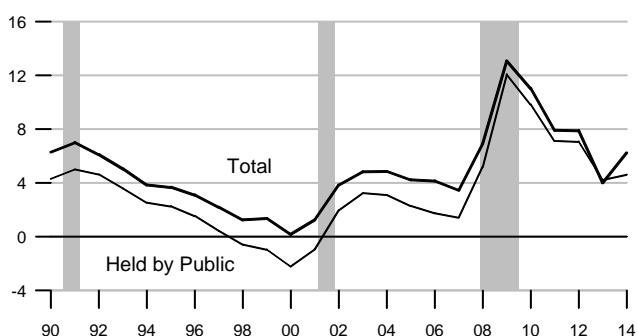
Federal Surplus (+) / Deficit (-)

Percent of GDP



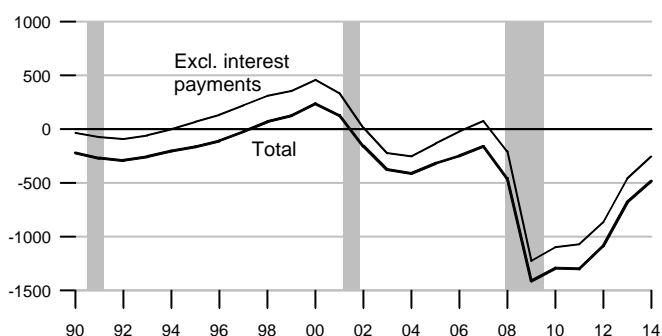
Change in Federal Debt

Percent of GDP



Federal Surplus (+) / Deficit (-), Unified Basis

Billions of dollars, fiscal years



Federal Government Debt

Billions of dollars, end of month or fiscal year
Excludes Agency-issued debt

	Total Public Debt	Held by Agencies and Trusts	Held by Public		Held by Private Investors	
			Total	Federal Reserve Banks	Total	Foreign and International
2011	14790.3	4658.3	10132.0	1664.7	8462.0	4912.0
2012	16066.2	4791.9	11274.4	1645.3	9619.0	5476.0
2013	16738.2	4757.2	11981.0	2072.3	9904.0	5653.0
2014	17824.1	5039.3	12784.8	2767.3	10333.0	NA
2011						
March	14270.1	4613.6	9656.6	1340.5	8311.0	4481.0
June	14343.1	4596.2	9746.9	1619.5	8123.0	4691.0
September	14790.3	4658.3	10132.0	1664.7	8462.0	4912.0
December	15222.9	4770.4	10452.5	1663.5	8783.0	5007.0
2012						
March	15582.1	4730.1	10852.0	1661.1	9185.0	5145.0
June	15856.4	4806.8	11049.5	1659.9	9380.0	5311.0
September	16066.2	4791.9	11274.4	1645.3	9619.0	5476.0
December	16432.7	4846.2	11586.6	1666.1	9909.0	5574.0
2013						
March	16771.4	4848.9	11922.5	1796.1	10115.0	5725.0
June	16738.3	4831.8	11906.6	1936.6	9965.0	5595.0
September	16738.2	4757.2	11981.0	2072.3	9904.0	5653.0
December	17156.1	4996.8	12159.3	2208.8	10147.0	5793.0
2014						
March	17601.2	4982.0	12619.2	2614.6	10300.0	5950.0
June	17632.6	5060.6	12572.0	2705.9	10172.0	6013.0
September	17824.1	5039.3	12784.8	2767.3	10333.0	NA
December	18141.4	5117.6	13023.8	NA	NA	NA