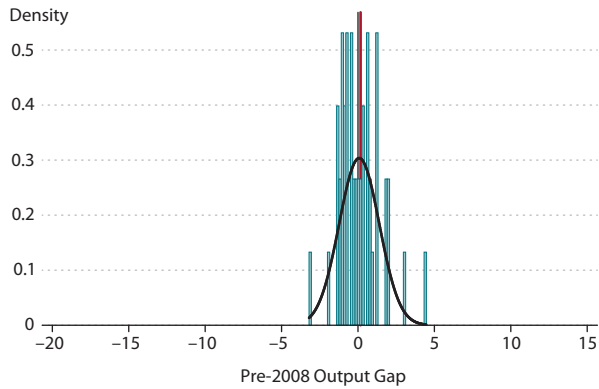


Distribution of Output Gap by State

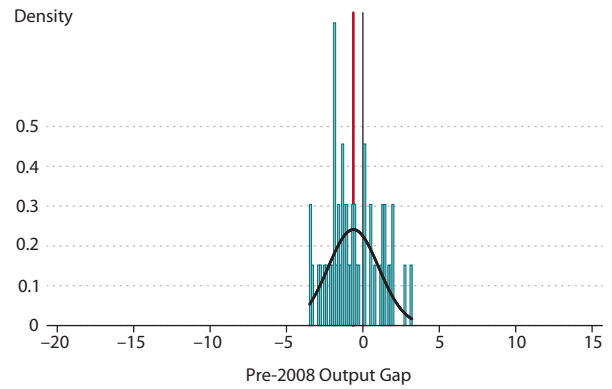
Histogram of Output Gap per State 2006

Mean: 0.1; Standard Deviation: 1.3



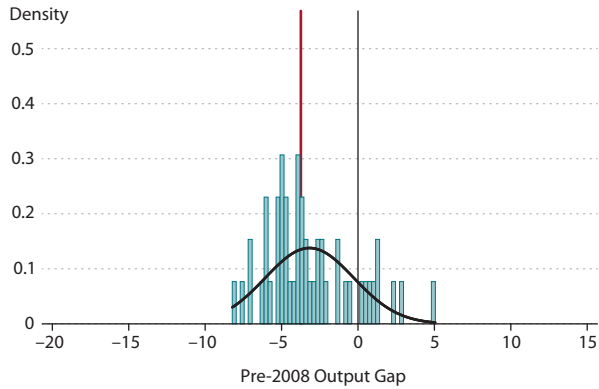
Histogram of Output Gap per State 2007

Mean: -0.6; Standard Deviation: 1.7



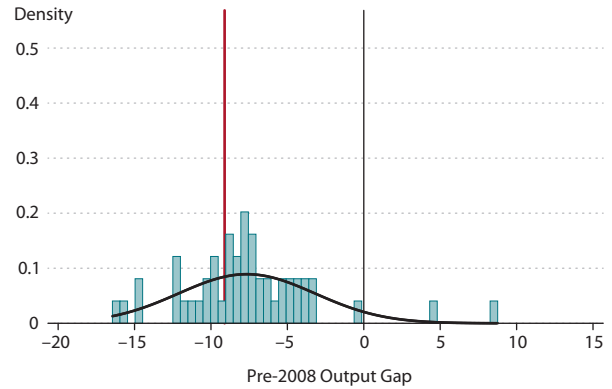
Histogram of Output Gap per State 2008

Mean: -3.2; Standard Deviation: 2.9



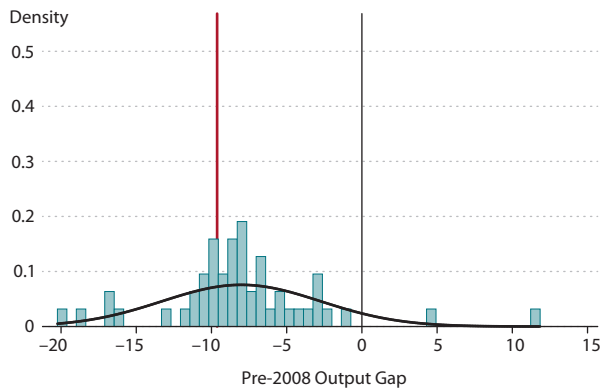
Histogram of Output Gap per State 2009

Mean: -7.7; Standard Deviation: 4.5



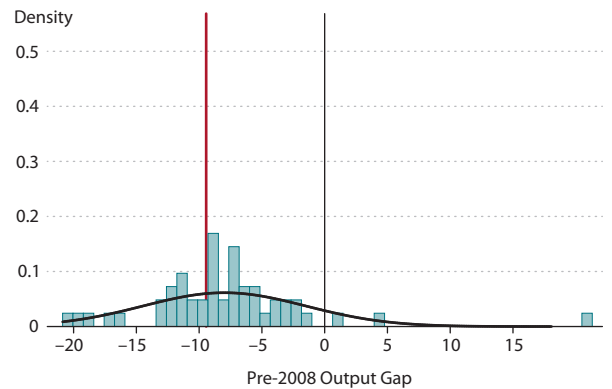
Histogram of Output Gap per State 2011

Mean: -8; Standard Deviation: 5.3



Histogram of Output Gap per State 2012

Mean: -8; Standard Deviation: 6.5



NOTE: The red line represents the national output gap. Data for 2010 are available but omitted here.